

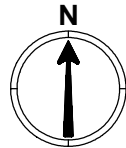
 FOR SALE OR LEASE BY PRIVATE PARTY

 AVAILABLE SITES

 MAIN ENTRANCES

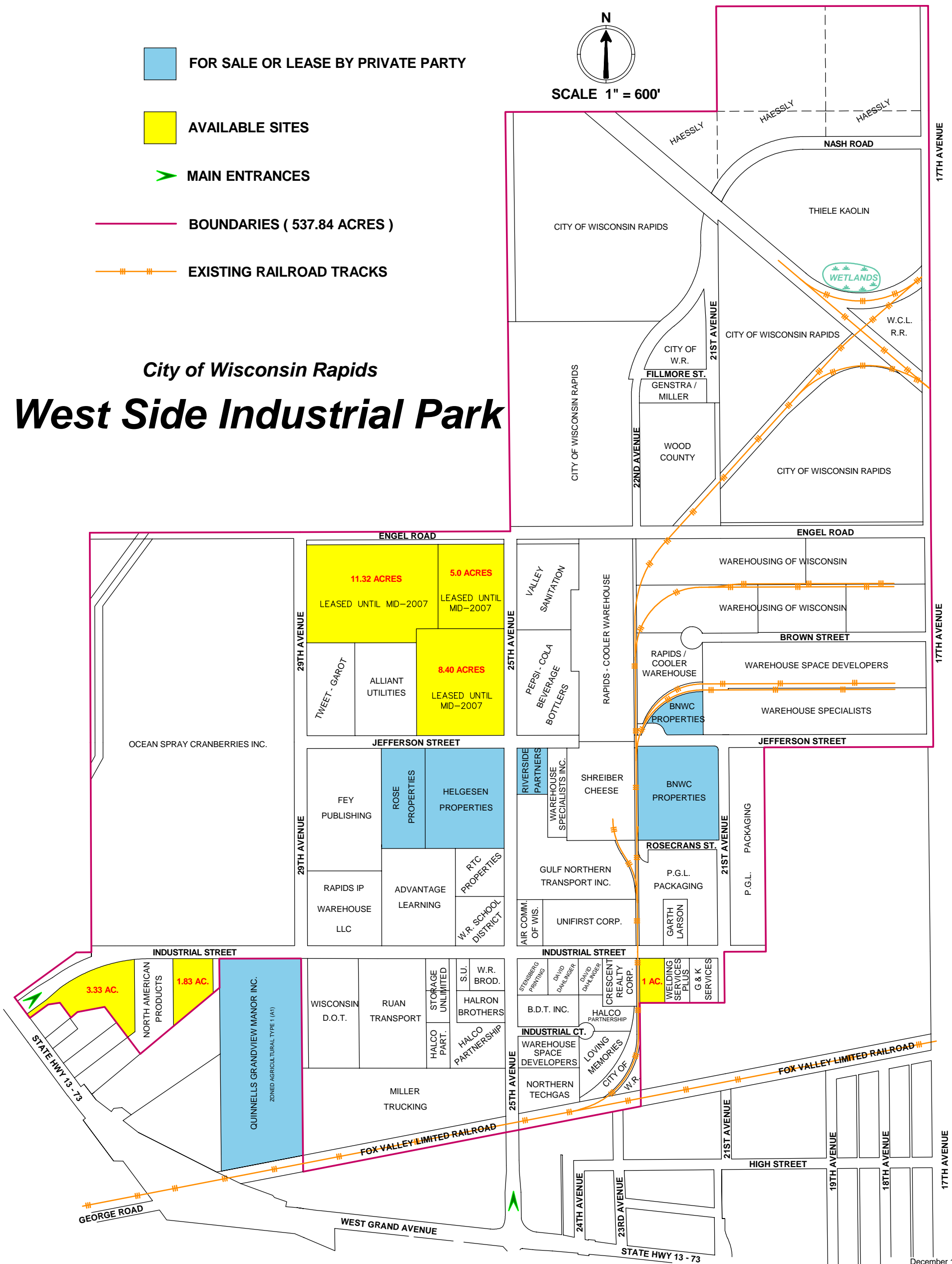
 BOUNDARIES (537.84 ACRES)

 EXISTING RAILROAD TRACKS



SCALE 1" = 600'

City of Wisconsin Rapids West Side Industrial Park



NOTES:

- STRUCTURES MAY NOT BE MORE THAN 1/3 OF TOTAL LOT SIZE
- ALL PROPERTY INSIDE OF THE PARK BOUNDARIES IS MANUFACTURING TYPE 3 (M3)